

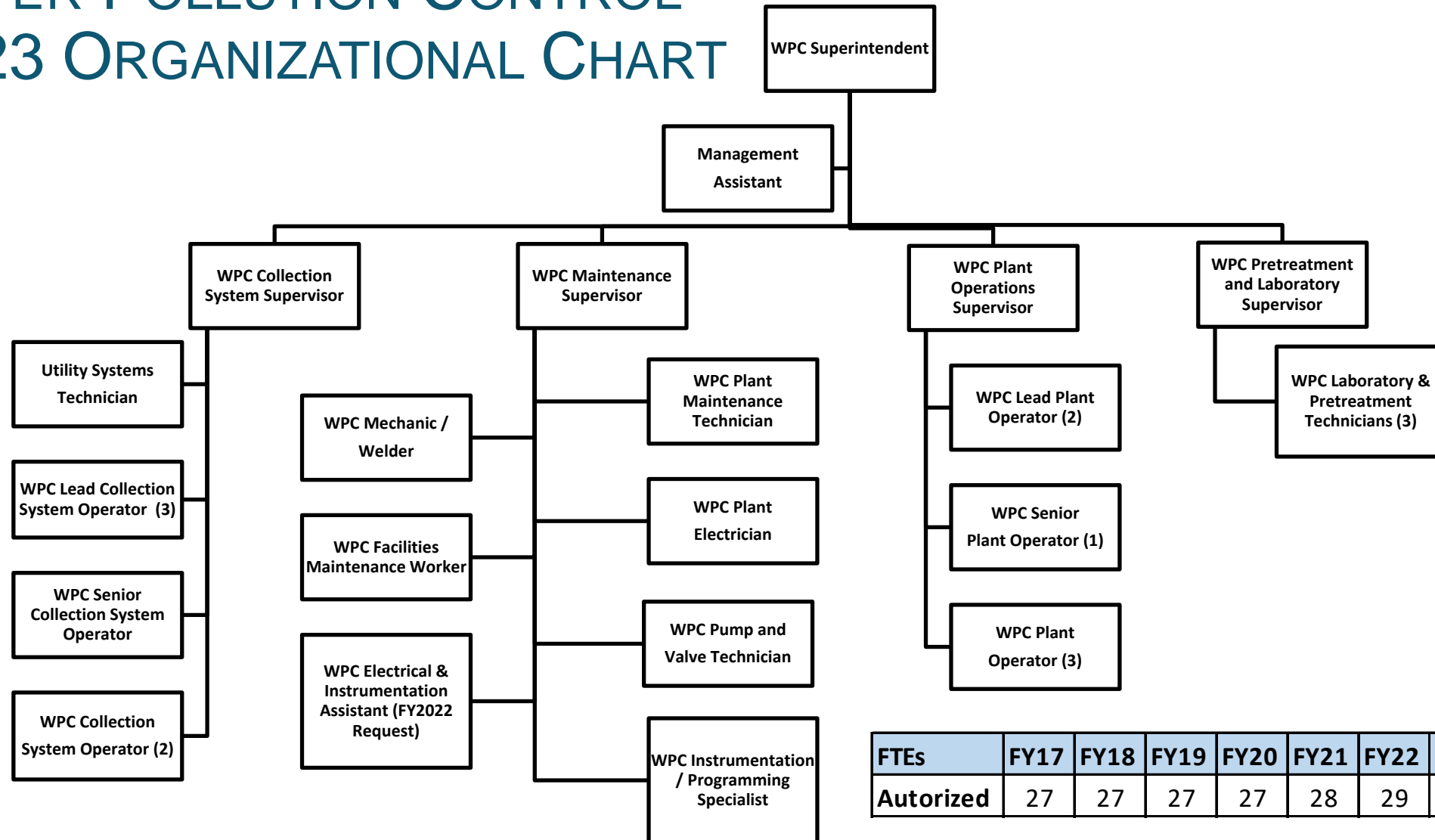
# WATER POLLUTION CONTROL

*Providing wastewater collection and treatment services at the lowest practical cost while meeting all regulatory requirements and providing excellent customer service.*

## FY 2023 BUDGET DEVELOPMENT

PRESENTED BY LEVI ADAMS, WPC SUPERINTENDENT, AND  
JEFFREY L. MANSFIELD, PE, CFM, PUBLIC WORKS DIRECTOR

# WATER POLLUTION CONTROL FY23 ORGANIZATIONAL CHART



FTEs	FY17	FY18	FY19	FY20	FY21	FY22	FY23	ΔFY17-FY23
<b>Authorized</b>	27	27	27	27	28	29	29	+2

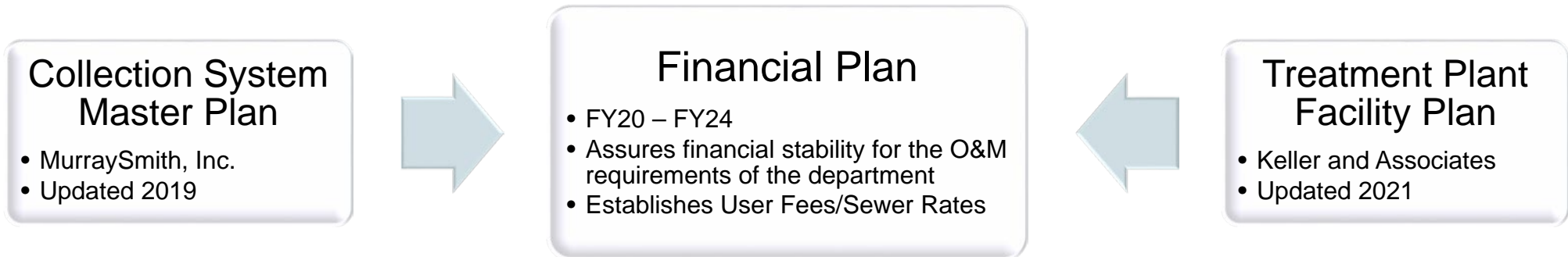
# WATER POLLUTION CONTROL REVENUE BUDGET COMPARISON FY22 TO FY23

FUND 32 WATER POLLUTION CONTROL				
	<b>FY22 BUDGET</b>	<b>FY23 PROPOSED BUDGET</b>	<b>Variance \$</b>	<b>Variance %</b>
<b>DEPT 30 ENTERPRISE FUND</b>				
Farm Leases	100,000	100,000	0	0.00%
Industrial Billing	3,200,700	3,569,700	369,000	11.53%
Utility Billing	8,980,271	9,249,679	269,408	3.00%
Miscellaneous	73,000	73,000	0	0.00%

# WATER POLLUTION CONTROL EXPENDITURES BUDGET COMPARISON

FUND 32 WATER POLLUTION CONTROL						
	FY20 ACTUALS	FY 21 ACTUALS	FY22 BUDGET	FY23 PROPOSED BUDGET	Variance \$	Variance %
DEPT 30 ENTERPRISE FUND						
Pay and Benefits	2,300,991	2,351,214	2,732,001	2,753,077	21,076	0.77%
Operations - Materials and Services	2,360,870	2,249,962	2,718,098	2,535,785	-182,313	-6.71%
Capital Outlay	995,710	819,740	2,135,000	2,035,000	-100,000	-4.68%
Transfers - Interfund Charges	4,914,950	4,894,122	4,954,077	3,652,560	-1,301,517	-26.27%
Transfers - WPC Construction Fund 074	2,700,000	2,700,000	1,300,000	5,800,000	4,500,000	346.15%
<b>DEPT 30 ENTERPRISE FUND - TOTAL</b>	<b>13,272,521</b>	<b>13,015,038</b>	<b>13,839,176</b>	<b>16,776,422</b>	<b>2,937,246</b>	<b>21.22%</b>

# WATER POLLUTION CONTROL FY23 CAPITAL OUTLAY AND STAFFING REQUESTS



## Collection System Improvements

Cured in Place Pipe (CIPP) 2-miles of 8" pipe	\$300,000
Cottonwood Lift Station Generator Replacement	\$50,000

## Treatment Plant Improvements

Paint Exteriors of Metal Buildings	\$150,000
Replace Lab HVAC	\$70,000

## Capital Construction Fund (074)

One-time Transfer from 032 Operating Fund	
to 074 WPC Capital Construction Fund	\$4,500,000

## Vehicles and Equipment Replacement

2 Pickup Trucks to Replace Aging Vehicles	\$75,000
Collection System Service Truck	\$165,000
Updated CCTV Camera for Sewer Mainline Inspection	\$200,000

## Staff

	Impact	Status
Public Works Utility Locators (2) • Estimated \$80K each • Split between WPC, Water, and Street Ops	\$53,000	Pending Approval
Public Works Asset Manager • Split between WPC, Water, and Street Ops	\$40,000	Request Deferred

# WATER POLLUTION CONTROL FY23 CAPITAL CONSTRUCTION FUND (074)

WPC is proceeding with the implementation of the major initiatives outlined in the WPC Facility Planning Study and engineering agreements approved by Council on 09/21/2021 and 02/17/2022. These initiatives are multi-year construction projects. Expenditures are estimates and not included in the FY23 budget. Staff will seek Council approval on final bids and execute spending through budget amendments.

## Projected Fund Activity

FY22 Ending Balance	\$6,700,000	
<b>Revenue</b>		
Annual Transfer	\$1,300,000	
One-time Transfer from 032	\$4,500,000	
<b>Total Revenue</b>		<b>\$12,500,000</b>

## Estimated Construction Expenditures Over the Next Few Years

Aeration System Improvements	\$2,000,000	
Digester #3 Mixing and Lid Repair	\$1,750,000	
Biogas Condensate Accumulator Tank	\$ 450,000	
Biosolids Dewatering Project	\$7,100,000	
<b>Total Estimated Expenditures</b>		<b>\$11,300,000</b>

## Administration and Operations Building

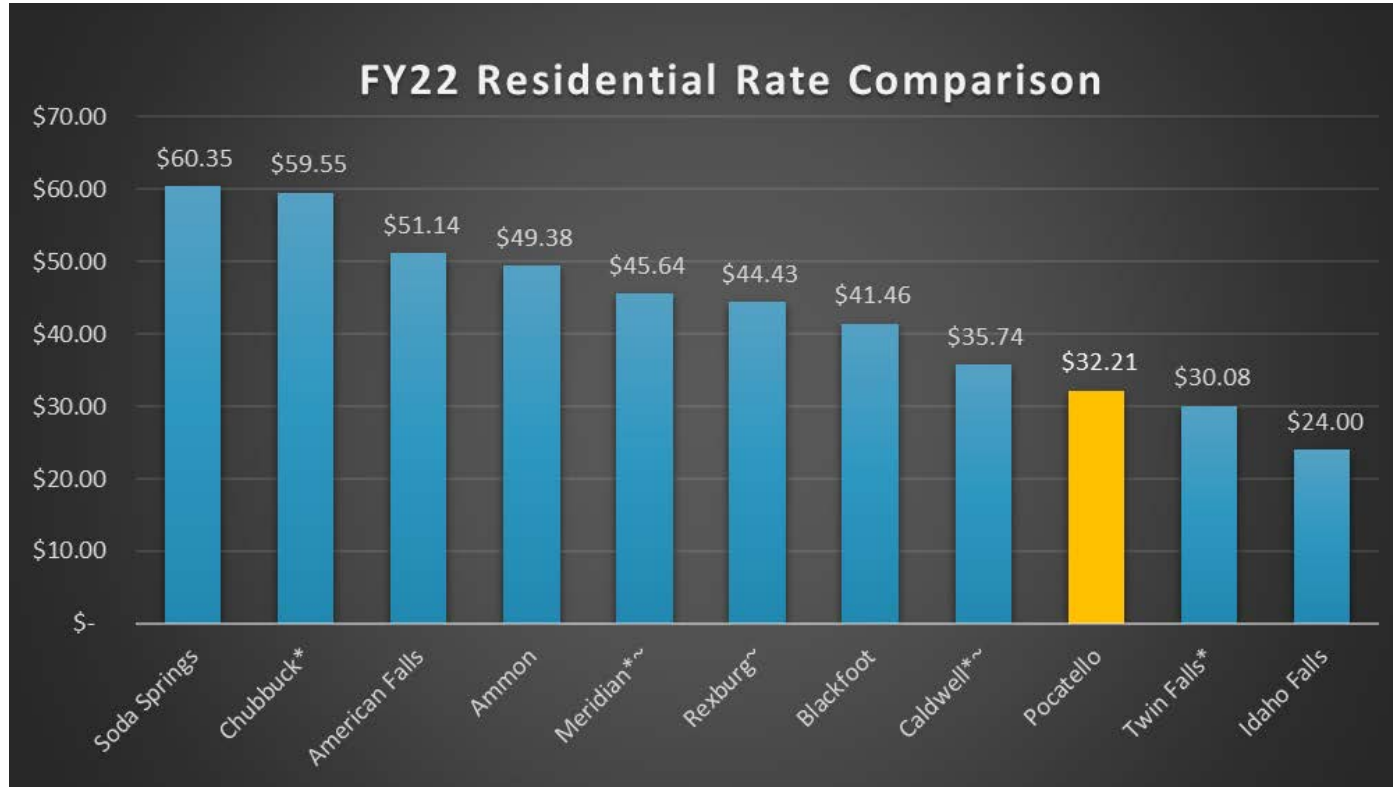
New Cost Estimate 2022	\$3,300,000
Budgeted from 2017 Estimate	\$2,000,000
<b>Difference</b>	<b>-\$1,300,000</b>

Design for the new building is underway. Construction is on hold.

## Included in All Cost Estimates

General Conditions	+10%
Contractor Overhead	+15%
Contingency	+30%

# WATER POLLUTION CONTROL CURRENT RATE COMPARISON



Source: S&A Engineers, PC 2022 Eastern Idaho Residential Water and Sewer User Rates and Connection Fees Survey \*

\* Gathered from City website.

~ Based on 6,000 gallons water usage.